

SEND Information Report for Families

Who we are:

Lime Academy Orton

What is important to us (our values):

“Putting Learners First”

We are committed to providing our children with an outstanding educational experience that is challenging, stimulating and based on fun and enjoyment.

Lime Academy Orton wants to provide our pupils:

- With teaching of a high quality which is planned for each child, using excellent resources and specialist approaches.
- With a broad and balanced curriculum which stimulates their interest in a wide range of learning opportunities.
- With professional staff that act in a positive way to develop relationships for learning.

Lime Academy Orton will provide all families and staff with a purposeful and friendly organisation that:

- Values all who learn, work in or visit the school.
- Supports all staff to use their skills fully and to learn new ones.
 - Provides clear leadership and effective management.
- Ensure the school is an important part of the local and national communities.

Here we look at the whole person, aiming to meet the educational, well-being and therapeutic needs of each pupil. Each of our staff members, our pupils and their family members are part of our school learning community. They all come together to help to make the school a special place where we are committed to;

“Putting Children First”.

Who we offer this service to:

Children and young adults (3 to 19) who have an Education Health Care Plan with a primary area of cognition and learning (severe or profound learning difficulties) as described in the SEND code of practice.

How and when we do it:

The school day runs from 9.00am to 3.30pm Monday to Friday.

How to contact us:

ortonoffice@limetrust.org
www.limeacademyorton.org

Lime Academy Orton
Peterborough
01733 391800

SEND Information Report

for Pupils

Who we are:
Lime Academy Orton

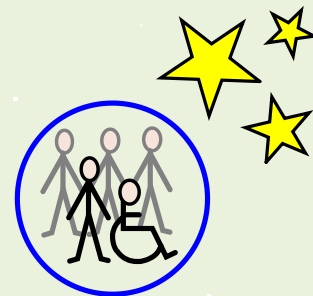
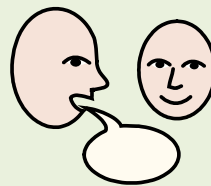


What is important to us (our values):

Putting you first and helping you to succeed in all areas of your life.

What we do:

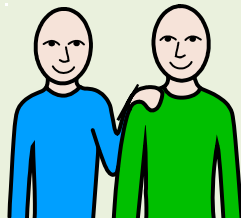
- Respect you as an individual.
- Help you learn in a fun and interesting way.
- Show you lots of exciting things and take you to new places.
- Make sure people know what you can do.
- Tell everyone how great you are.
- Help your family to care for you.
- Make sure you know about changes in your life.



“Putting Learners First”

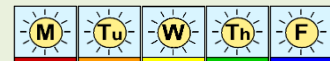
Who we offer this service to:

Children and young adults
from the age of 3 to 19.



How and when we do it:

The school day runs from
9.00am to 3.30pm
Monday to Friday.



How to contact us:

ortonoffice@limetrust.org
www.limeacademyorton.org



Lime Academy Orton
Peterborough
01733 391800

